

1 575 000 €

Buying bastide

4 rooms

Surface : 170 m²

Surface of the land : 1520 m²

Year of construction : 2010

Exposition : Sud est

View : Campagne

Inner condition : excellent

External condition : new

Couverture : tiles

Amenities :

Heated pool, Chalet 16 m²,

Carport, Double Glazing, Automatic

Watering, Laundry room, Automatic

gate

3 bedroom

2 terraces

1 bathroom

1 shower

3 WC

1 garage

2 parkings



Bastide Ref. : 394V2235M Le Plan-de-la-Tour

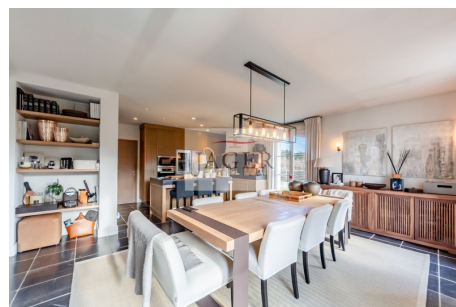
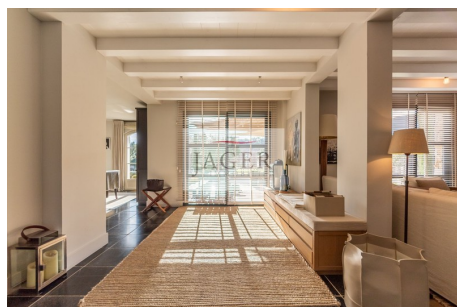
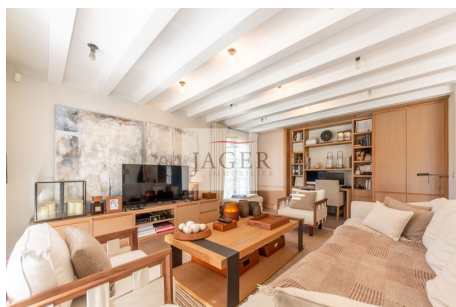
Very pretty house of about 180 m² on 1520 m² of flat land. It consists on the ground floor of a large living room of 85 m² with open kitchen, pantry / laundry room, large terrace Upstairs, Large suite of 28 m² with dressing room, bathroom and terrace Bedroom with rear bedroom with a total area of 25 m² (convertible into 2 bedrooms), shower room and wc. Bedroom, kitchenette and bathroom in independent chalet Heated / refreshing floor, heated swimming pool,

Fees and charges :

1 575 000 € fees included

Document non contractuel

16/05/2021 - Prix T.T.C



Jager Immobilier - Passage du Cros - 83310 Grimaud

Tél: +33 (0)4 94 43 71 44 - Fax: +33 (0)4 94 81 32 17 - info@jager-immobilier.com

Carte professionnelle CPI n° 8304 2018 000 028 555 - RCS FREJUS 752 947 465 000 15 - SARL 5000 €

Code NAF 6831Z - QBE 110 000 €